

INSTALLATION *guide*

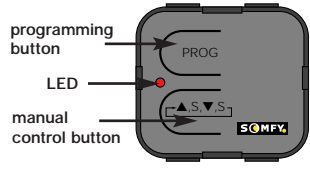
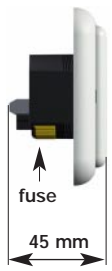
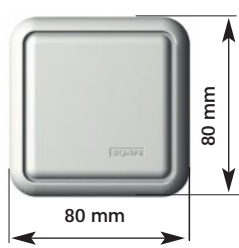


inteo *LIGHTING indoor RTS*

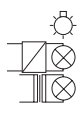
The LIGHTING indoor RTS is a radio receiver dedicated to control an incandescent or halogen lamp with an RT or RTS control (no lamp with gear). Up to twelve different controls can be memorized in the memory of the LIGHTING indoor RTS allowing individual, group and master commands.

This device must be installed and programmed by qualified installers for whom this instruction is intended.

1 Characteristics



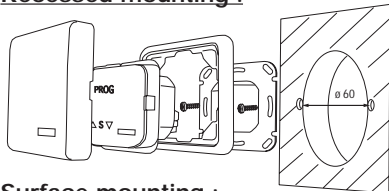
- Main supply : 220-240V ~
- Fuse : 3,15A
- Class II product
- Protection index : IP30
- Load : incandescent or halogen lamps 500 W max.
- Radio frequency : 433.42 MHz
- Operating temp. : +5°C to +40°C



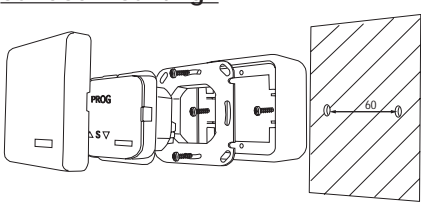
CE Hereby, SOMFY, declares that this equipment is in compliance with the essential requirements and other relevant provisions of Directive 1999/5/EC. A Declaration of Conformity is available at the web address www.somfy.com Heading CE

2 Installation

Recessed mounting :



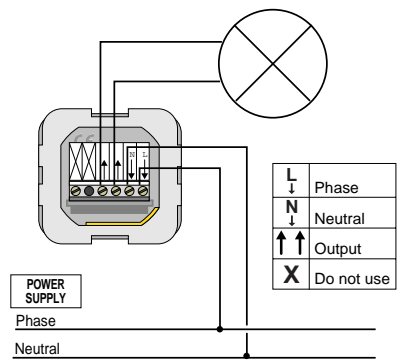
Surface mounting :



Recommendation of mounting for better radio reception :

- minimum distance between LIGHTING indoor RTS and the floor : 1,5 m.
- minimum distance between a LIGHTING indoor RTS and a radio transmitter : 30 cm.
- minimum distance between two LIGHTING indoor RTS : 20 cm.

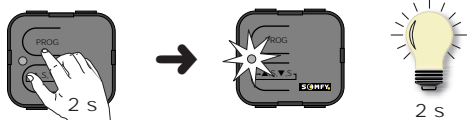
Warning : cordless radio equipment (e.g. headphones) in 433MHz can affect the functioning of the LIGHTING indoor RTS.



3 Programming and operating

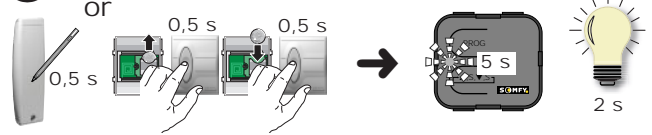
3.1 Record the first control

1 Set the LIGHTING indoor RTS in its programming mode :



Press for more than **2 seconds** on the programming button of the LIGHTING indoor RTS.
 → The LED of the LIGHTING indoor RTS lights on and the lamp lights for 2 secs.
 The LIGHTING indoor RTS is in programming mode for one minute.

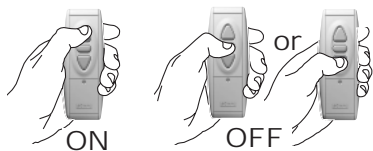
2 Record the first control :



RTS control : press briefly the "prog" button.
RT control : remove the battery, press briefly the button, replace the battery and press again briefly the button.
 → The lamp lights during 2 secs. again and the LED of the LIGHTING indoor RTS blinks during 5 sec. The control has been recorded.

3.2 Operating

With a RTS control



Press briefly the ▲ button to switch the lamp ON.
Press briefly the ■ or ▼ buttons to switch the lamp OFF.

With a RT control



Press briefly on the front button of the RT control to switch the lamp ON or OFF.

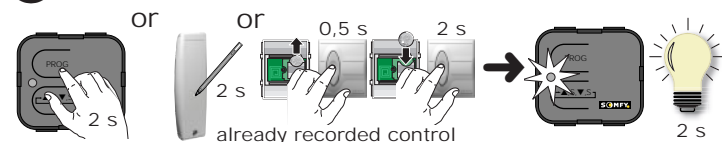
With the built in control button



You can also control the lamp with the push button located on the **LIGHTING indoor RTS**.

3.3 Record a new control

1 Set the LIGHTING indoor RTS in its programming mode :



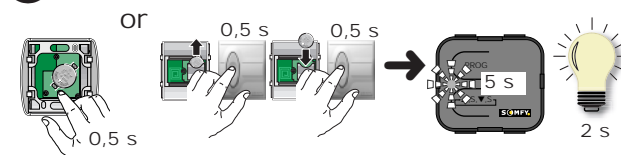
Press for more than 2 sec. on the programming button of the **LIGHTING indoor RTS** or use an **already recorded control**.

RTS control : press for more than **2 sec.** on the "prog" button.

RT control : remove the battery, press **briefly** the button, replace the battery and press for more than **2 sec.** on the button.

→ The LED of the **LIGHTING indoor RTS** lights on and the lamp lights for 2 secs.

2 Record the new control :



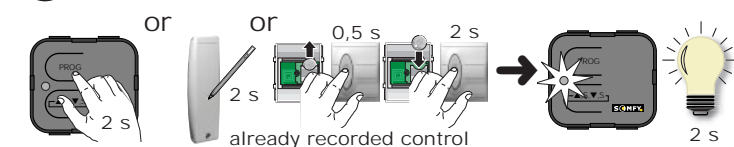
RTS control : press briefly the "prog" button.

RT control : remove the battery, press briefly the button, replace the battery and press again briefly the button.

→ The lamp lights during 2 secs. again and the LED of the **LIGHTING indoor RTS** blinks during 5 sec. The new control is recorded.

3.4 Remove a control

1 Set the LIGHTING indoor RTS in its programming mode :



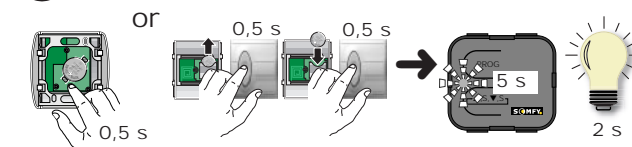
Press for more than 2 sec. on the programming button of the **LIGHTING indoor RTS** or use an **already recorded control**.

RTS control : press for more than **2 sec.** on the "prog" button.

RT control : remove the battery, press **briefly** the button, replace the battery and press for more than **2 sec.** on the button.

→ The LED of the **LIGHTING indoor RTS** lights on and the lamp lights for 2 secs.

2 Remove the control :



RTS control : press briefly the "prog" button.

RT control : remove the battery, press briefly the button, replace the battery and press again briefly the button.

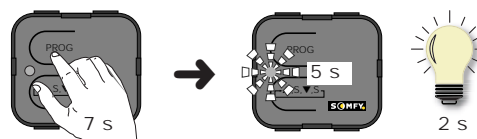
→ The lamp lights during 2 secs. again and the LED of the **LIGHTING indoor RTS** blinks during 5 sec. The control has been erased.

Note : When you enter in programming mode with an already recorded control, you cannot erase it

3.5 Complete reset (back to factory configuration)

Press for more than 7 seconds the programming button of the **LIGHTING indoor RTS** until the LED lights.

→ The LED lights up after 2 seconds and blinks after 7 seconds. Then, the lamp lights during 2 secs. the **LIGHTING indoor RTS** has been completely cleared and no more controls are recorded. You have then to re-program the **LIGHTING indoor RTS** from the first step of programming (refer to the section 3.1 "Record the first control").



4 Trouble shooting guide

Nothing works:

- ⇒ Check the light.
- ⇒ Check the power supply.
- ⇒ Check the battery of the transmitter.
- ⇒ Check that the transmitter has been properly recorded in the **LIGHTING indoor RTS** memory (section 3).
- ⇒ Check for any other possible source of radio interferences.

Lost in your programming mode:

- ⇒ Just make a complete reset and start again.